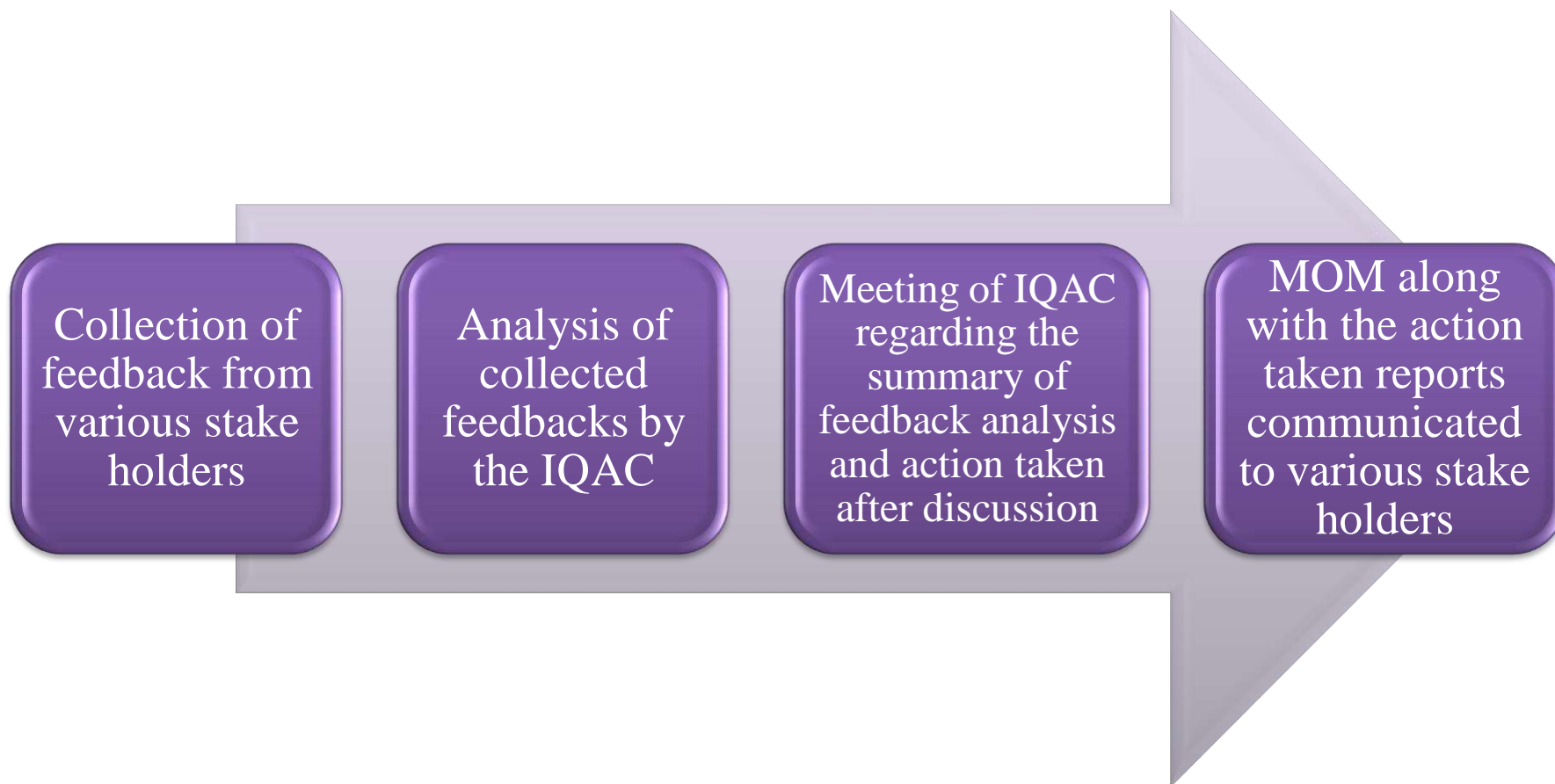


FEEDBACK MECHANISM



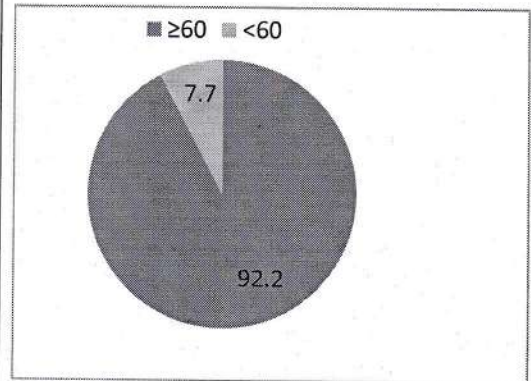
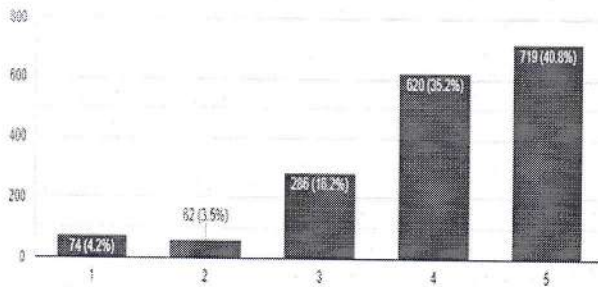
Detailed Feedback analysis of stakeholder's: Students, parents, alumni and employer etc. of Academic year 2021-22



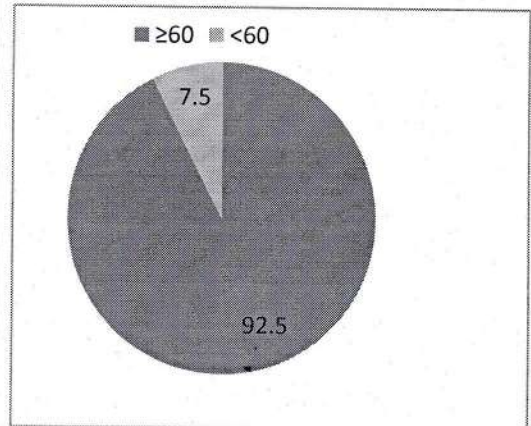
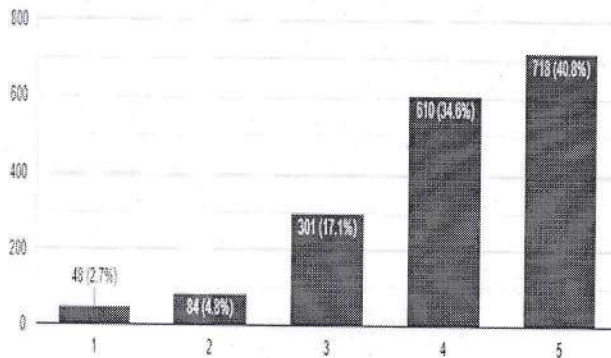
Student Feedback Form Analysis Report Academic Year 2021-22

(A) Student's Curriculum Feedback

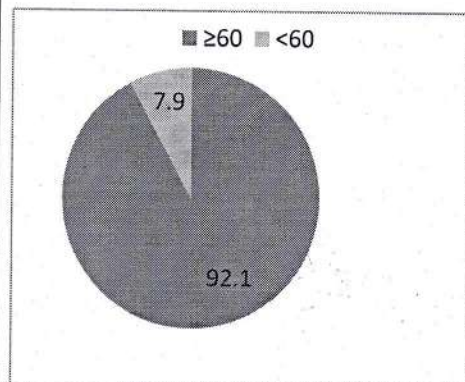
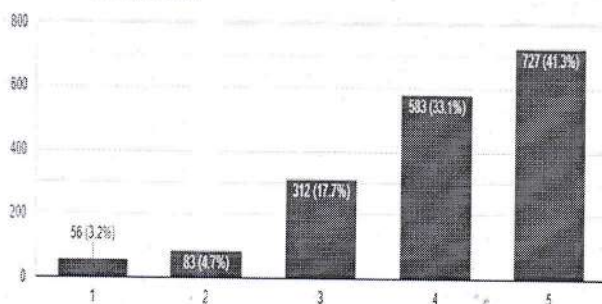
1. To what extent do you agree the curriculum provided by RTU is satisfactory?



2. To what extent do you agree on the curriculum in encouraging Industry-Academic Interactions?



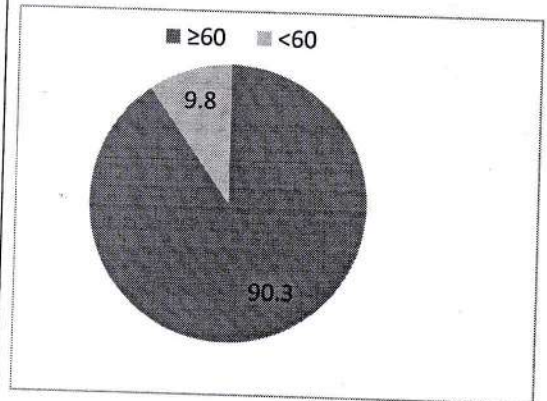
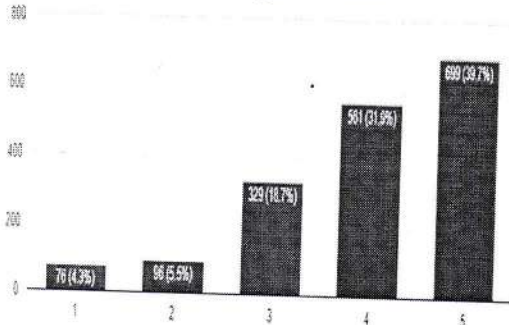
3. To what extent do you agree the curriculum helps in understanding real-time problems and solutions?



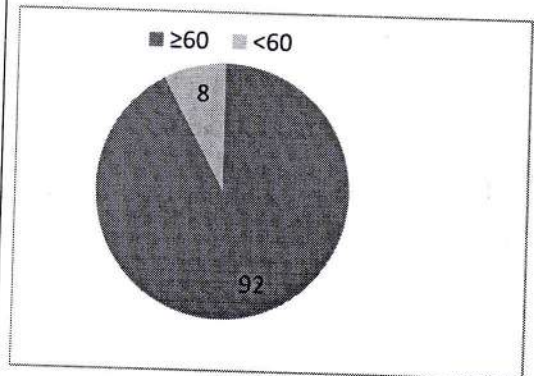
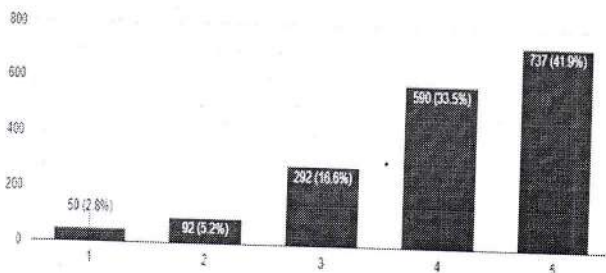

PRINCIPAL
Jaipur Engineering College &
Research Centre
Tonk Road, Jaipur-302022



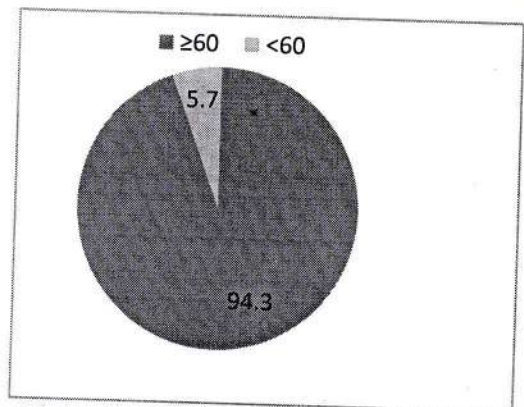
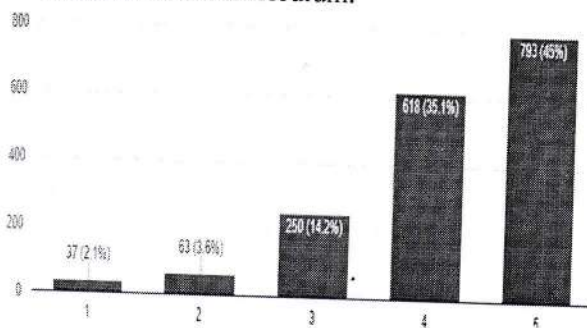
4. To what extent do you agree the curriculum will help to compete at the global level?



5. To what extent the curriculum will help in preparing for higher education.



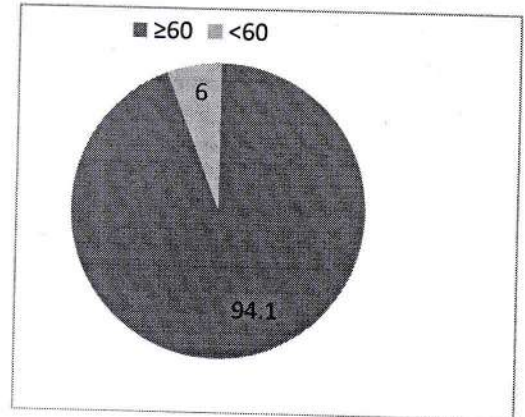
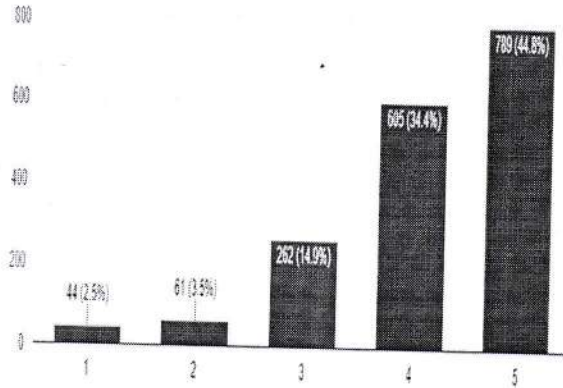
6. To what extent are human values, professional ethics, and environment and sustainability included in the curriculum.





JAIPUR ENGINEERING COLLEGE
AND RESEARCH CENTRE

7. To what extent do you agree on efforts made by the institute/ teachers to inculcate soft skills, life skills, and employability skills to make ready for the work.



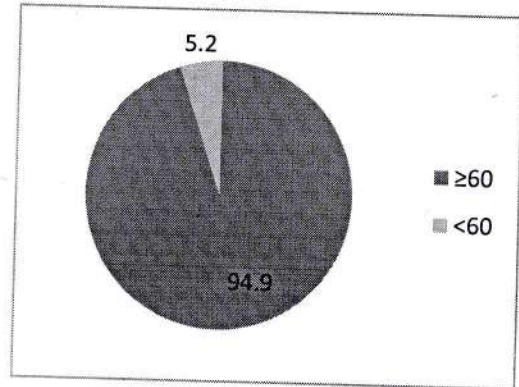
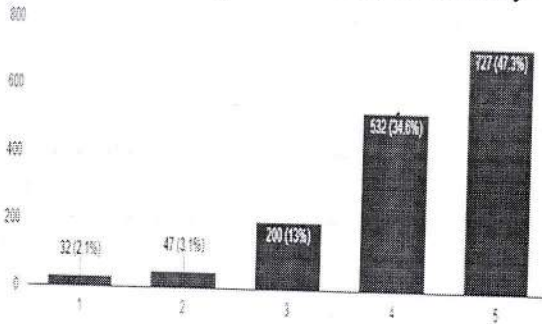
IQAC Coordinator

IQAC Chairperson
JECRC
Jaipur Engineering College &
Research Centre
Bank Road, Jaipur-302022

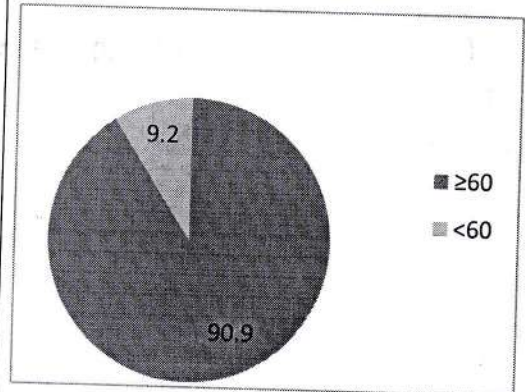
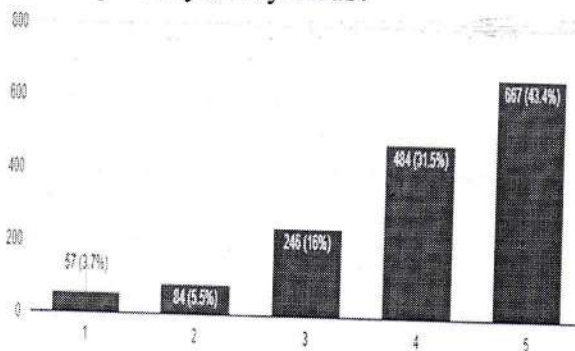


(B) Student's Teaching and Learning

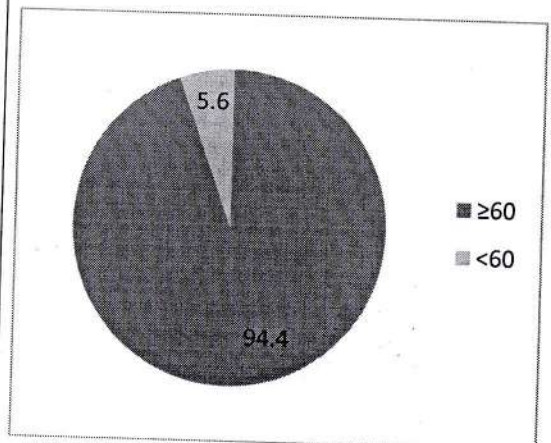
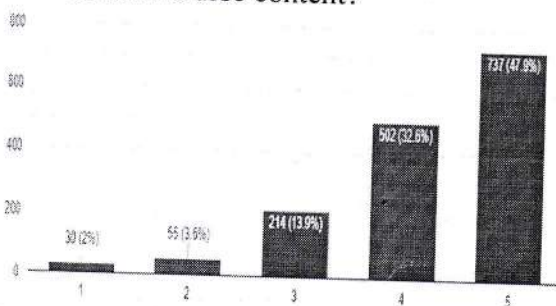
1. To what extent the teacher covered entire syllabus as prescribed by University.



2. To what extent the teacher covered relevant topics beyond syllabus?

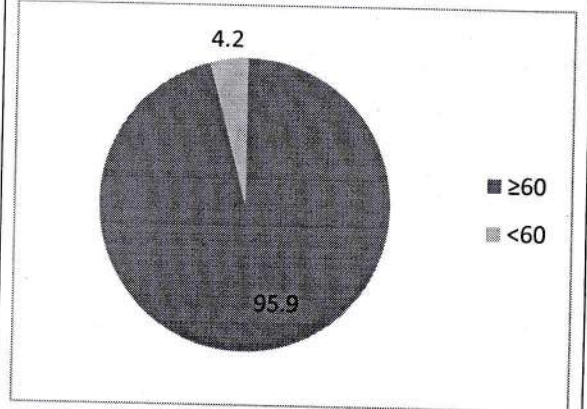
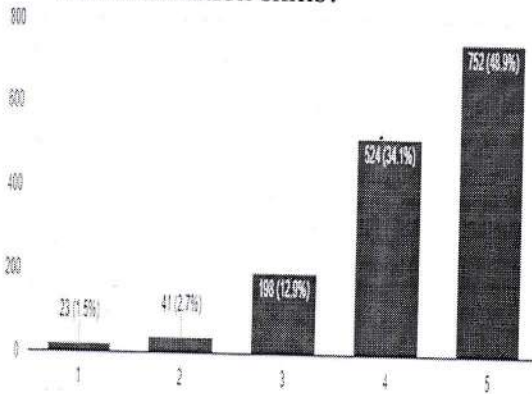


3. To what extent do you agree with the effectiveness of teacher in terms of technical content/course content?

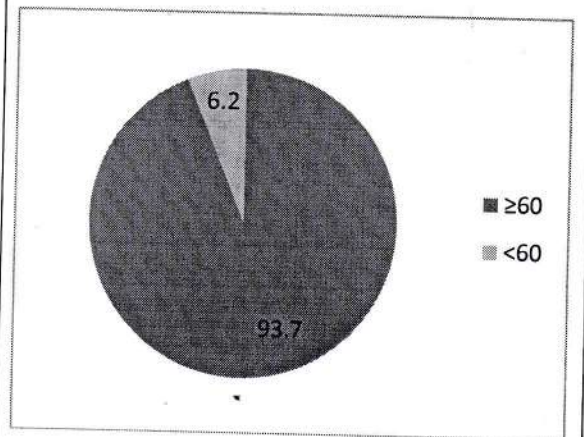
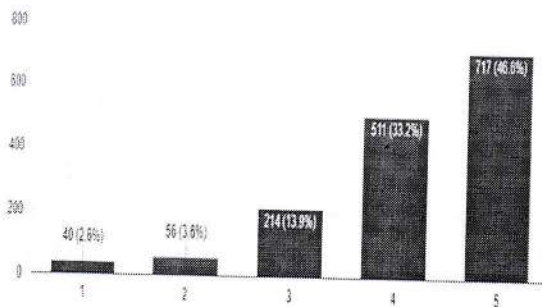




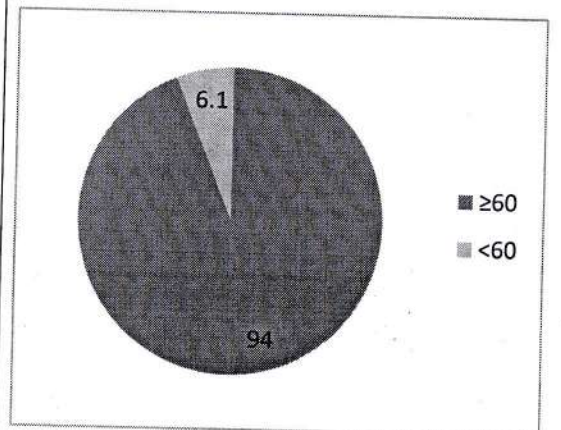
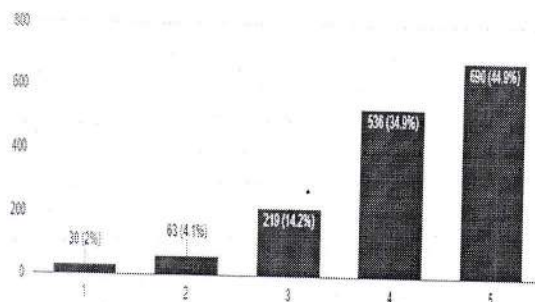
4. To what extent do you agree with the effectiveness of teacher in terms of communication skills?



5. To what extent do you agree with the effectiveness of teacher in terms of use of teaching aids/E-content?

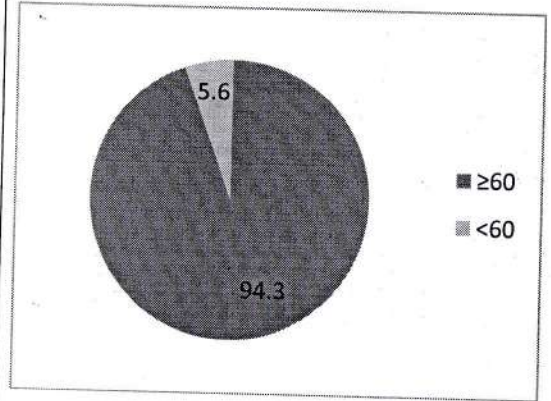
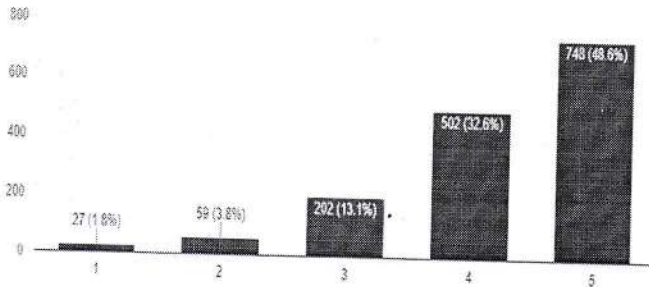


6. To what extent do you rate the pace on which contents were covered?

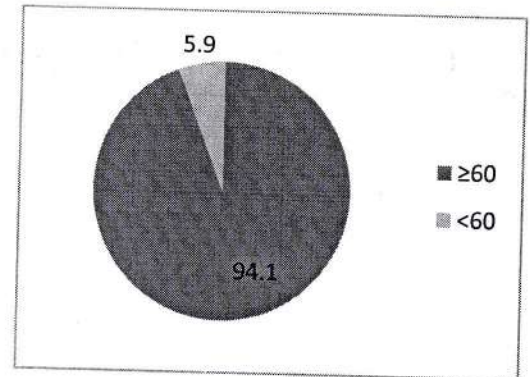
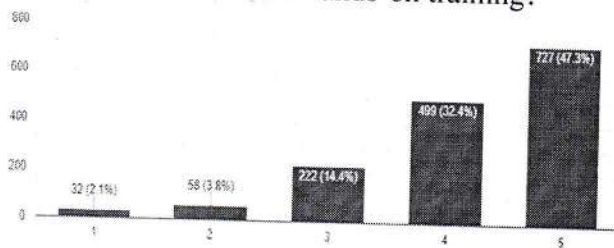




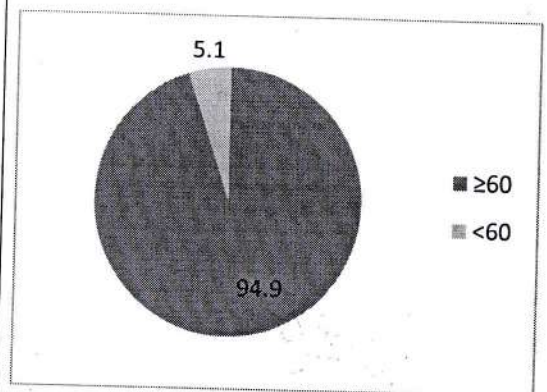
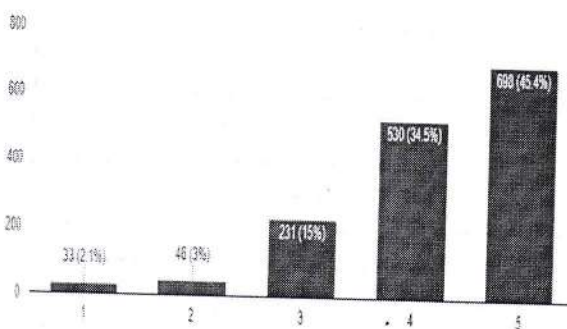
7. To what extent is the teacher motivation and inspiration for students to learn?



8. To what extent does the teacher support the development of students in practical demonstration and hands-on training?

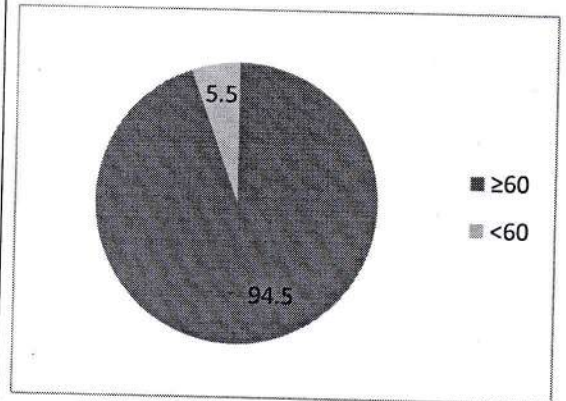
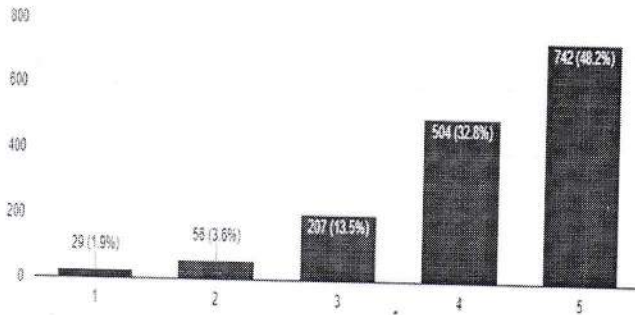


9. To what extent is the clarity of expectations of students?

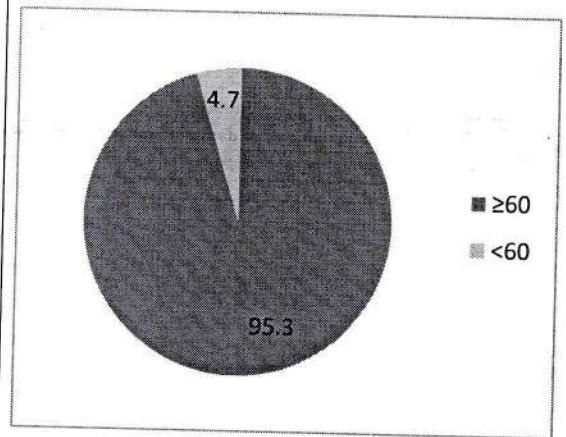
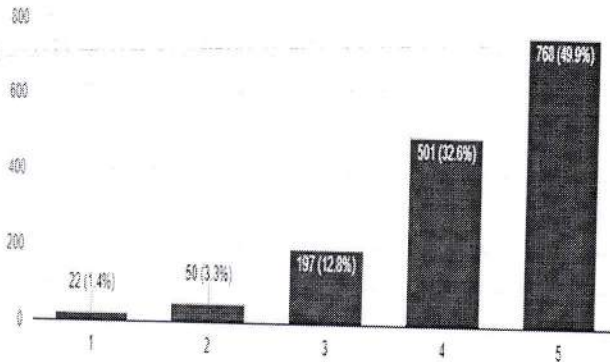




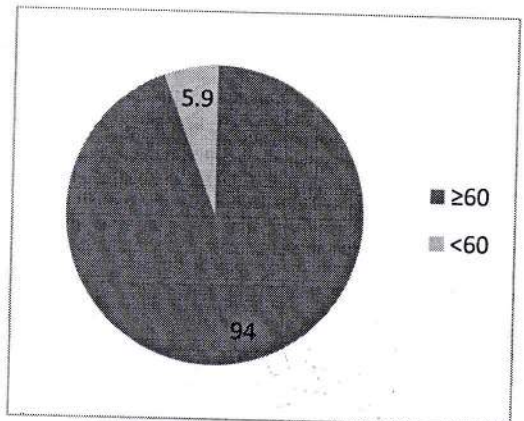
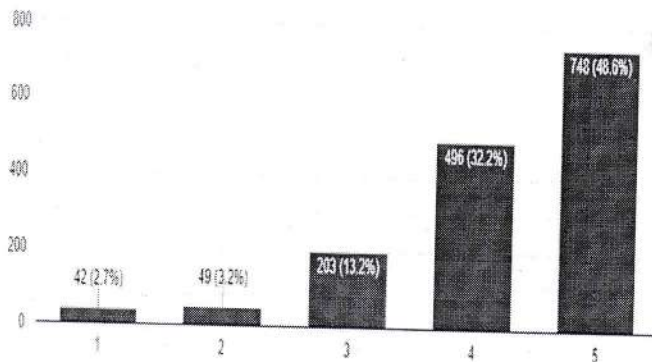
10. To what extent do you agree with the feedback provided to the student regarding progress regularly?



11. To what extent do you agree with the willingness to offer help and advice to students?



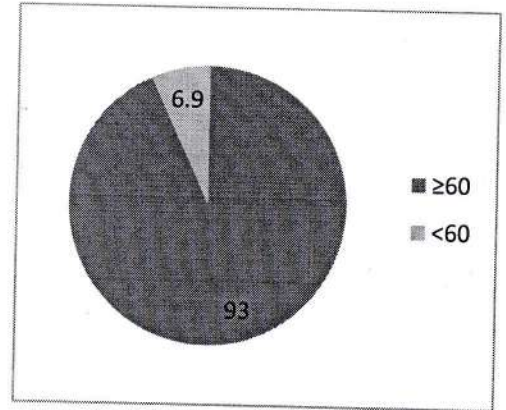
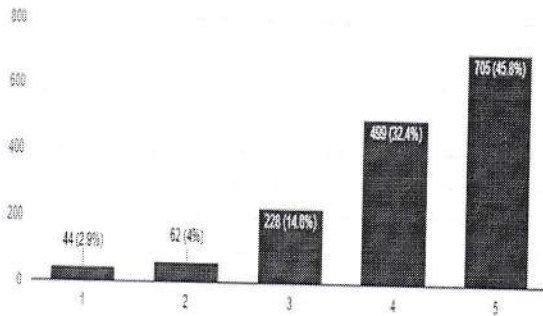
12. To what extent does the teacher motivate students to participate in extracurricular activities?



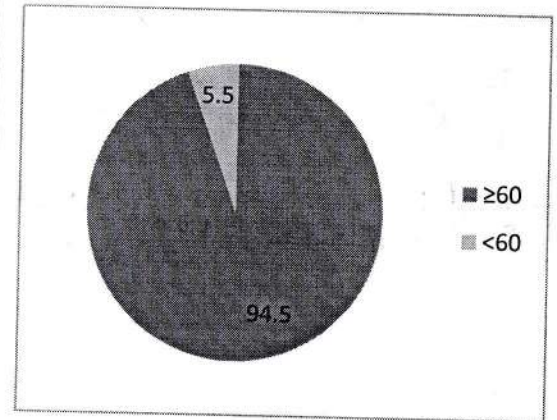
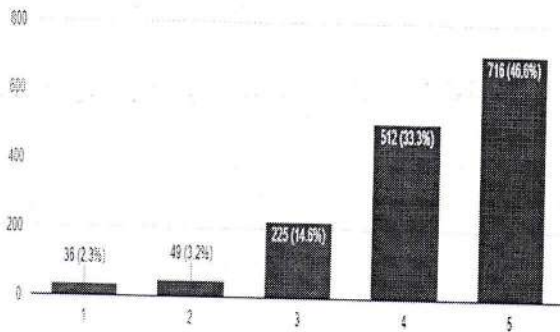

PRINCIPAL
Jaipur Engineering College &
Research Centre
Tonk Road, Jaipur-302022



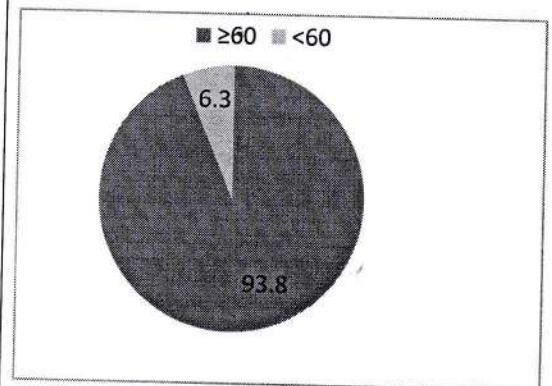
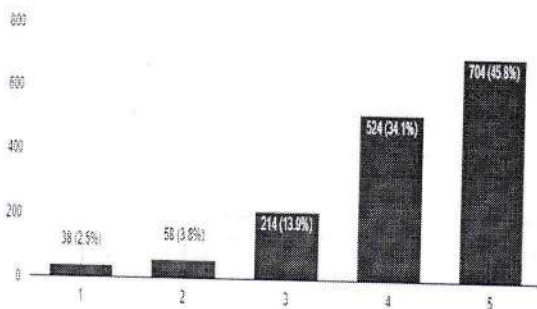
13. To what extent does the teacher use modern teaching aids, handouts, suitable references, PowerPoint presentations, web resources, etc.?



14. To what extent do the institute/ teacher inculcate soft skills, life skills, and employ ability skills to make ready for the work.



15. To what extent do the institute/ teacher use student-centric methods, such as experiential learning, participative learning, Hands on training, practical demonstration and problem-solving methodologies for enhancing learning experiences?



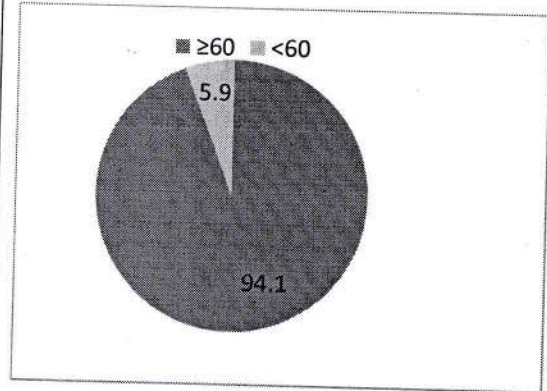
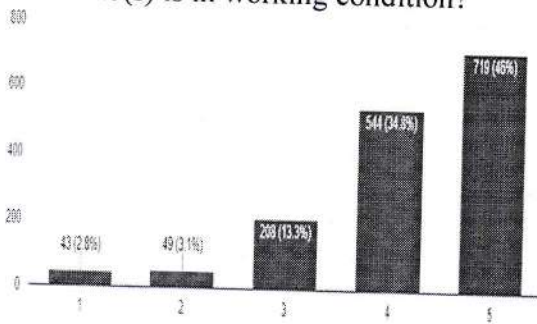

IQAC Coordinator


IQAC Chairperson
FRFQS
Jaipur Engineering College &
Research Centre
Bank Road, Jaipur-302022

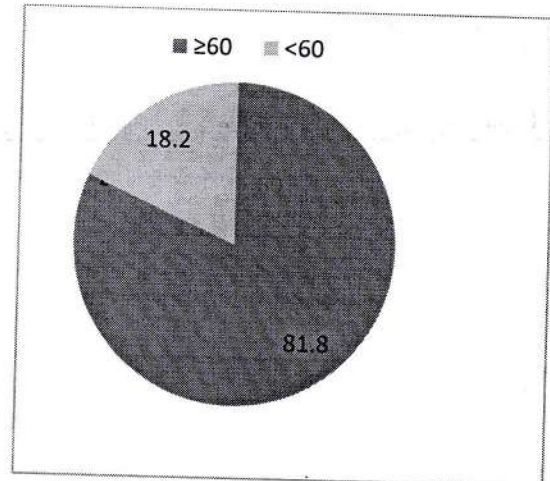
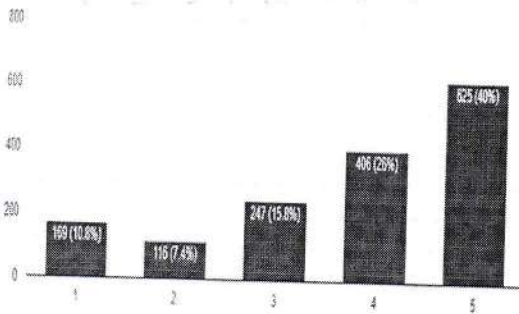


(C) Student's Infrastructure Feedback Analysis

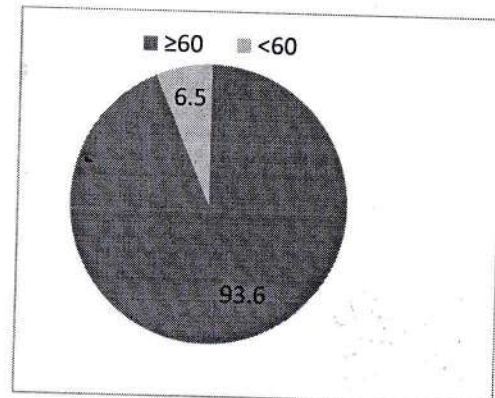
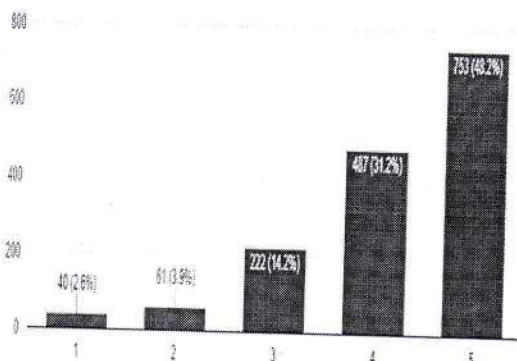
1. To what extent do you agree the equipment/hardware/software in the lab(s) is in working condition?



2. To what extent do you agree the Internet facilities are available on the college campus?



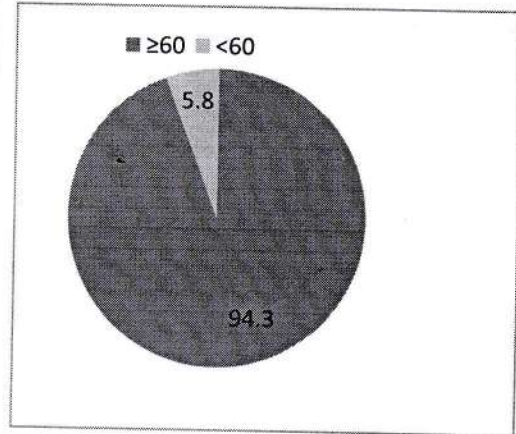
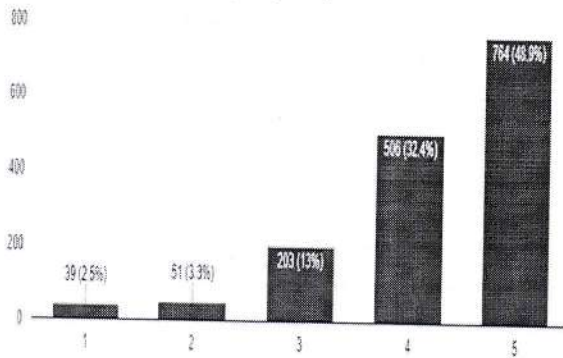
3. To what extent do you agree the prescribed books/reading materials are available in the library?





JAIPUR ENGINEERING COLLEGE
AND RESEARCH CENTRE

4. To what extent do you agree the campus is clean and properly maintained?

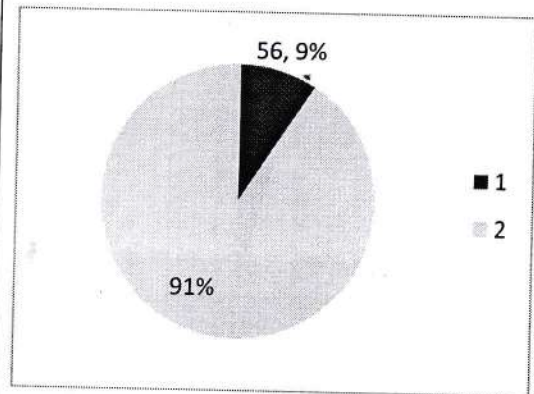
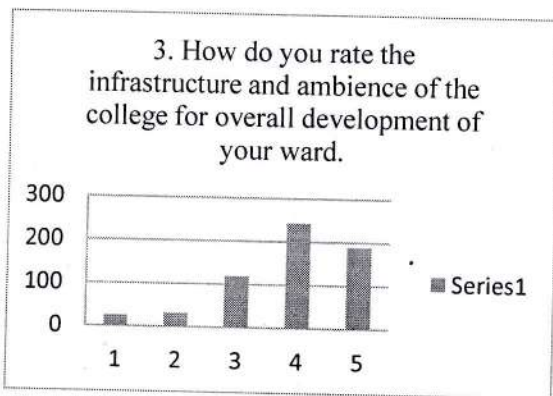
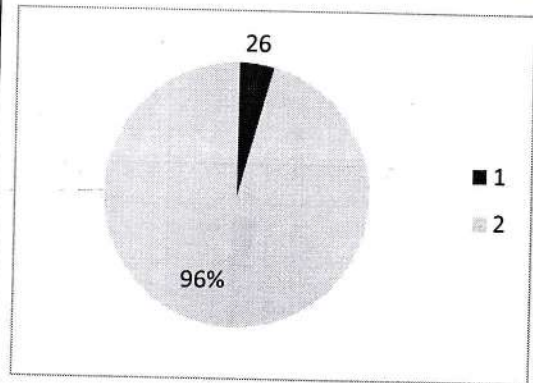
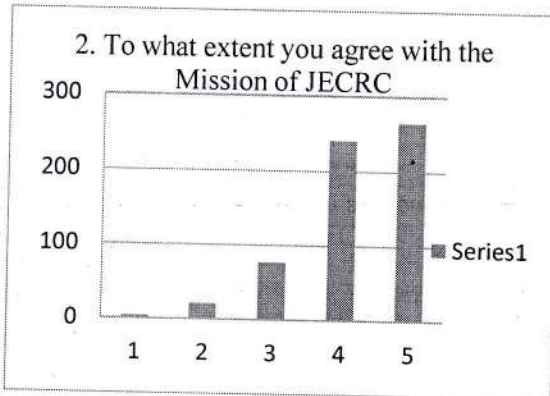
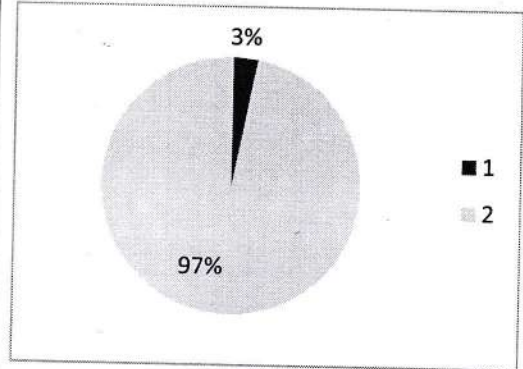
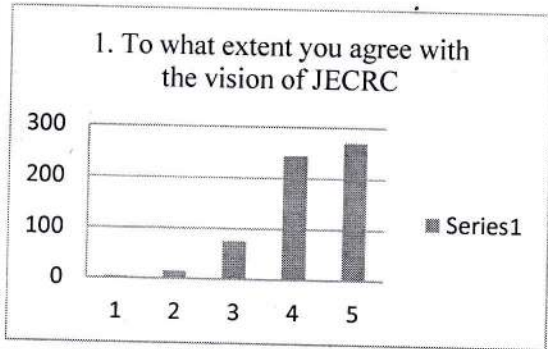


IQAC Coordinator

IQAC Chairperson
FR/2021
Jaipur Engineering College & Research Centre
Bank Road, Jaipur-302022

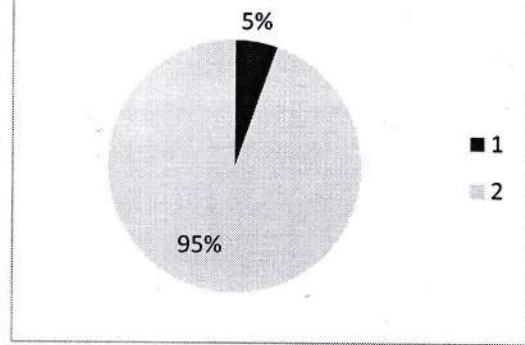
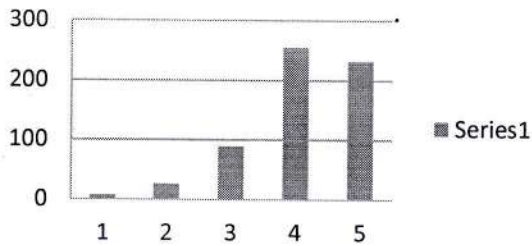


Parents Feedback Analysis

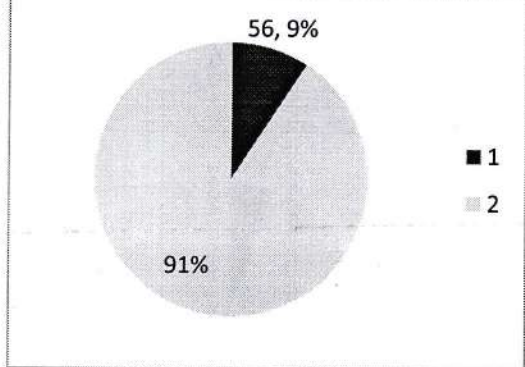
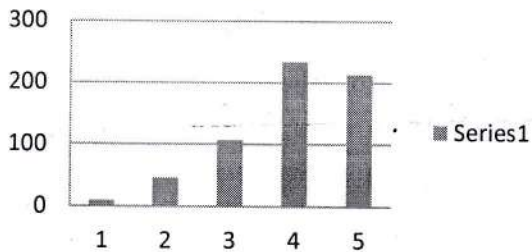




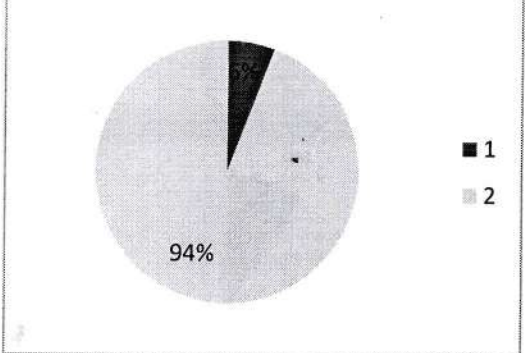
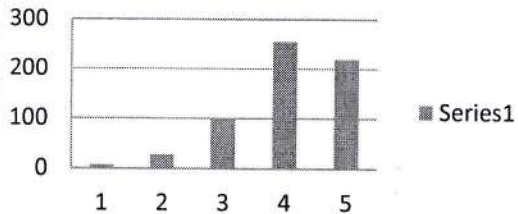
4. To what extent the faculty of department is accessible to your ward



5. Where do you rate the efforts of the college in providing the study material and books to your ward



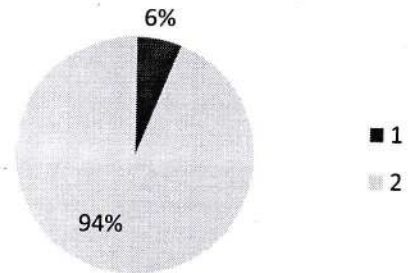
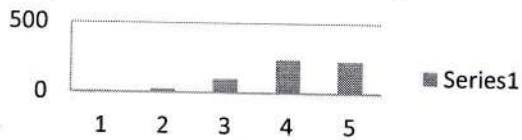
6. How satisfied are you with the placement/job opportunities provided by the college?



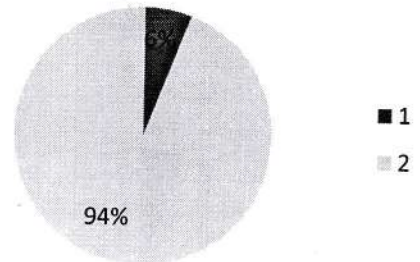
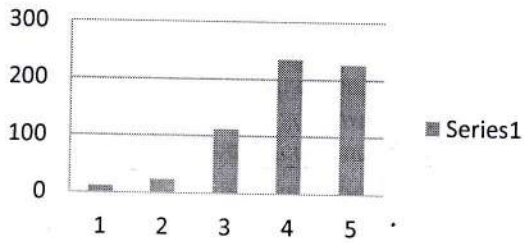


JAIPUR ENGINEERING COLLEGE
AND RESEARCH CENTRE

7. To what extent the opportunities are provided to your ward for curricular/cocurricular activities.



8. At what extent do you recommend JECRC to your friends/ relatives .

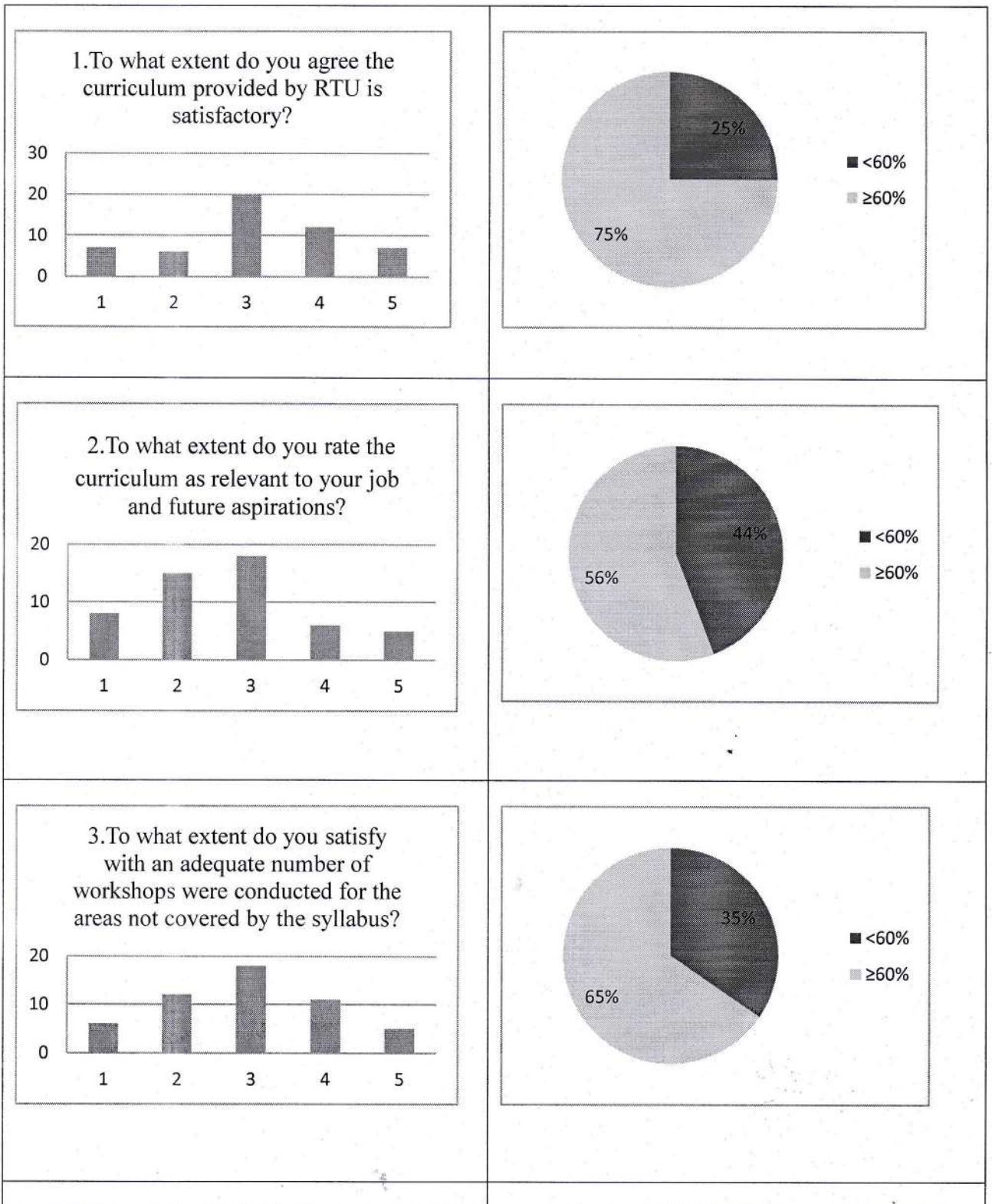


IQAC Coordinator

IQAC Chairperson
JECRC
Jaipur Engineering College &
Research Centre
Tank Road, Jaipur-302022

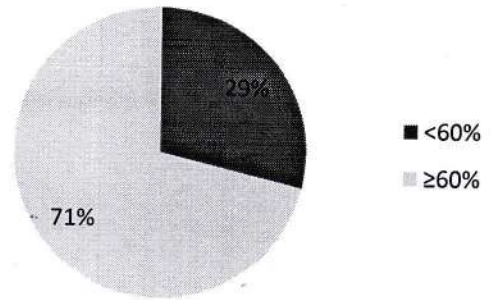
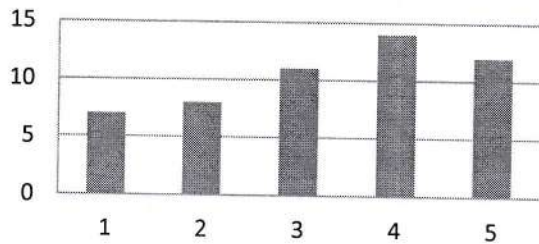


Alumni Feedback Analysis

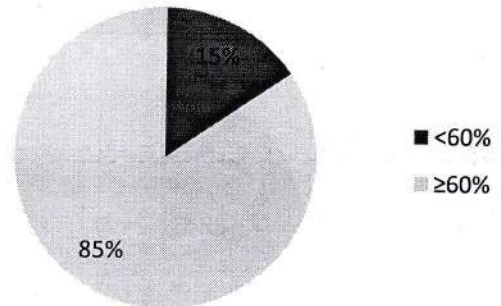
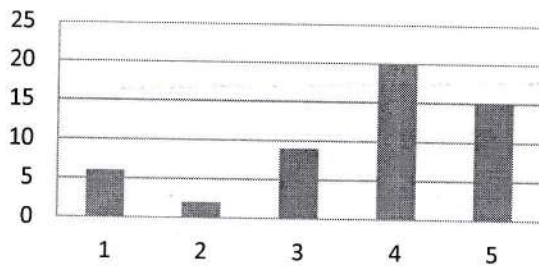




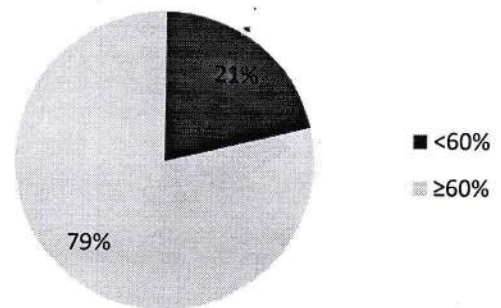
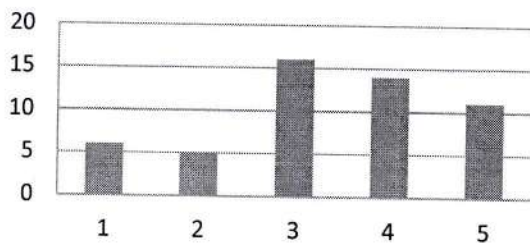
4. To what extent do you rate the infrastructure facilities in the campus?



5. To what extent are you satisfied with the teacher-student relationship?

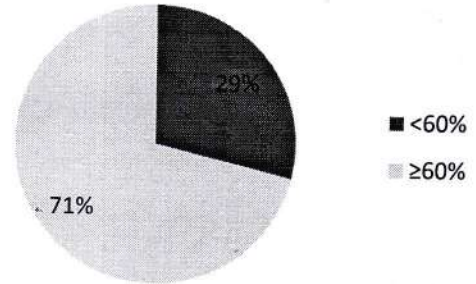
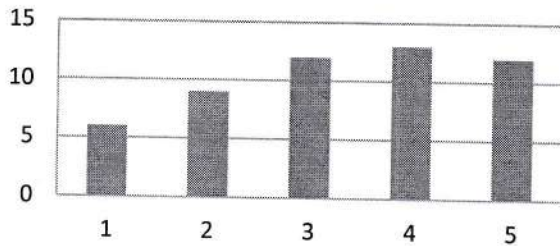


6. How do you rate the activities, organized by the Department/Institute for your overall development?

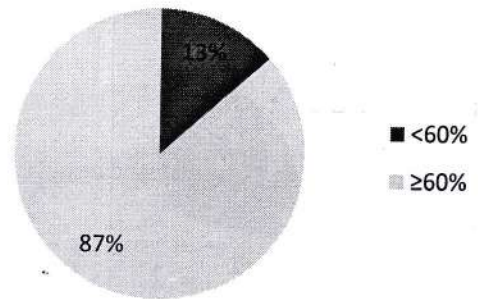
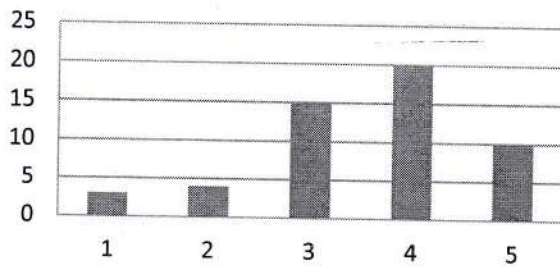




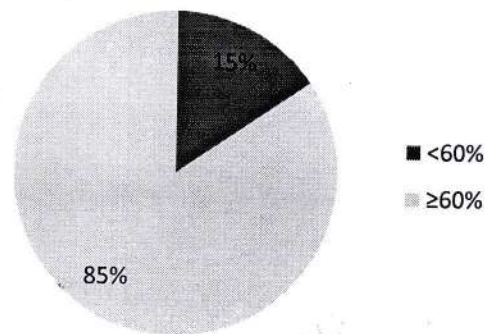
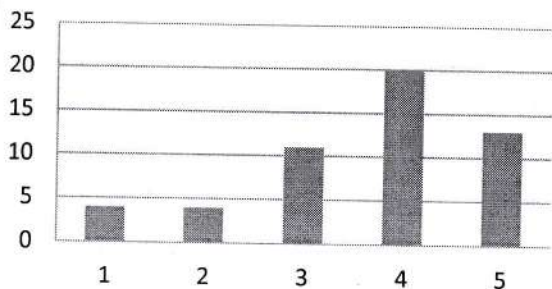
7. How do you rate the career counseling and guidance for higher studies from T&P Cell?



8. To what extent do you agree with the technical skills and communication skills, inculcated in you?



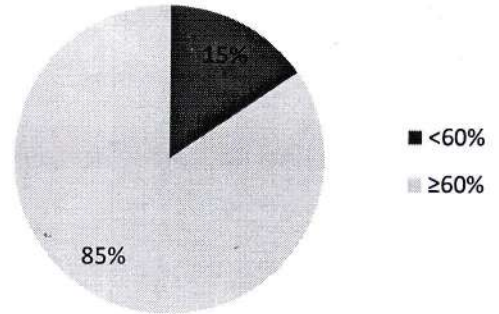
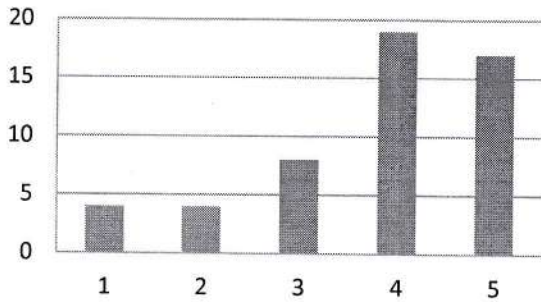
9. To what extent do you agree the problem-solving capacity, ethical values and social responsibility were inculcated in you?



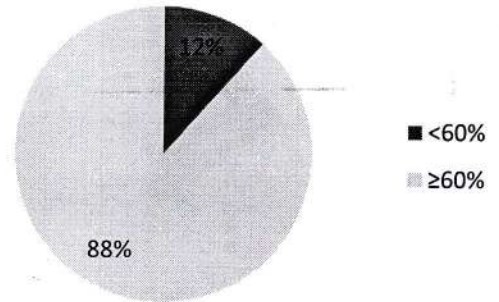
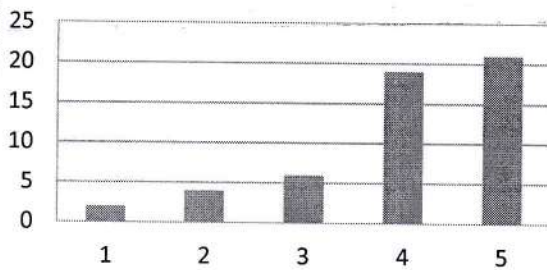


JAIPUR ENGINEERING COLLEGE
AND RESEARCH CENTRE

10. To what extent do you agree the leadership skills and teamwork were inculcated in you?



11. To what extent do you interested in giving an inspiration talk/ sharing your experience with your juniors?

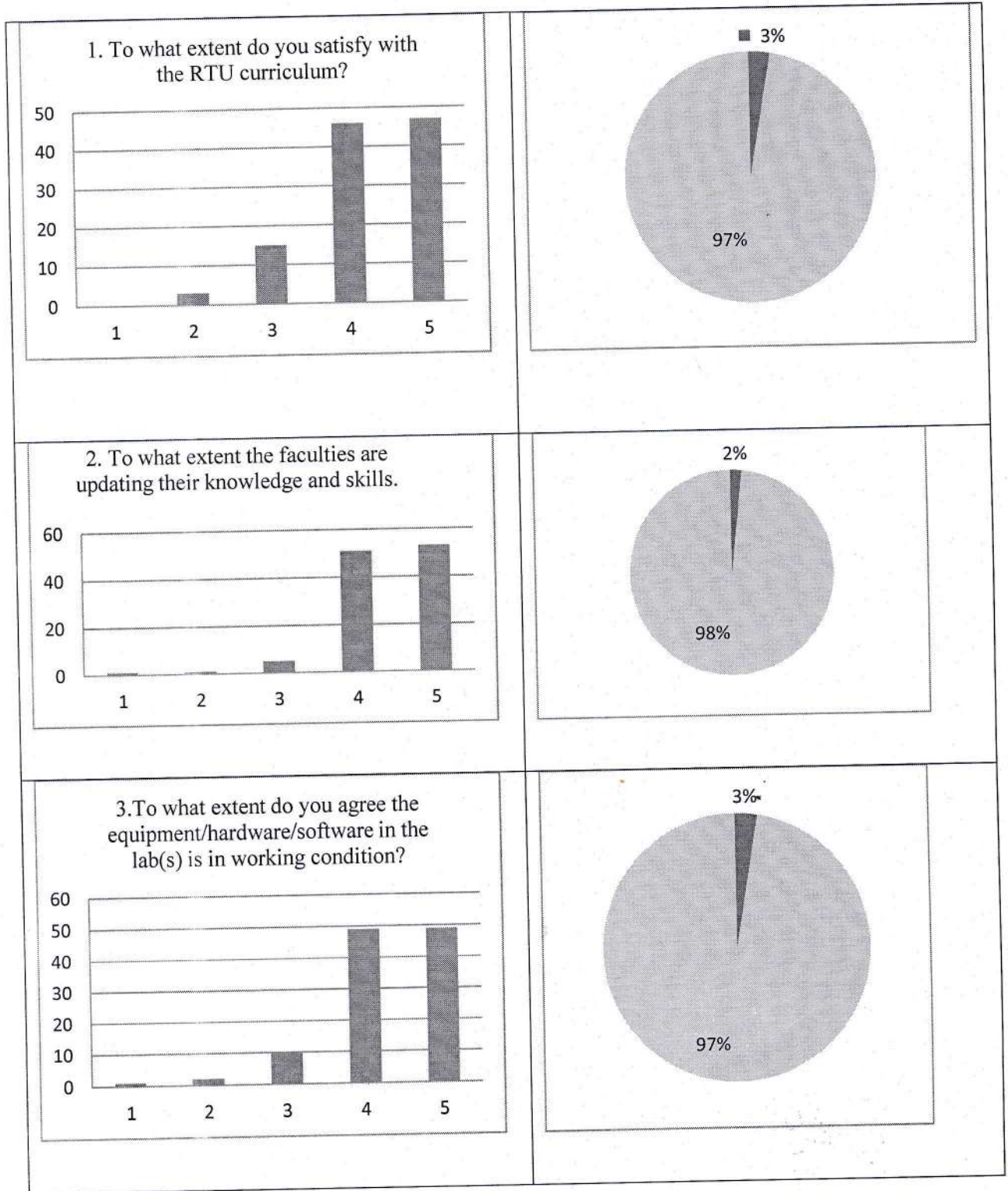


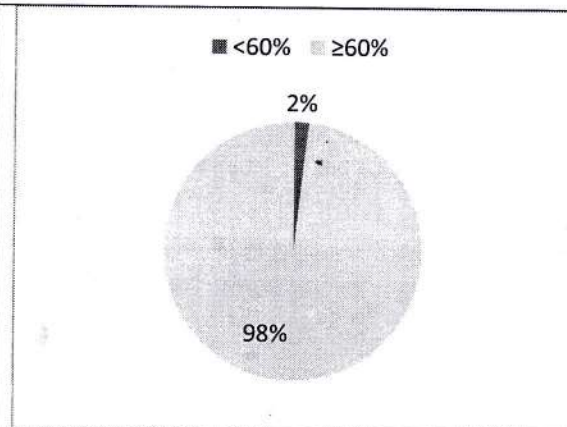
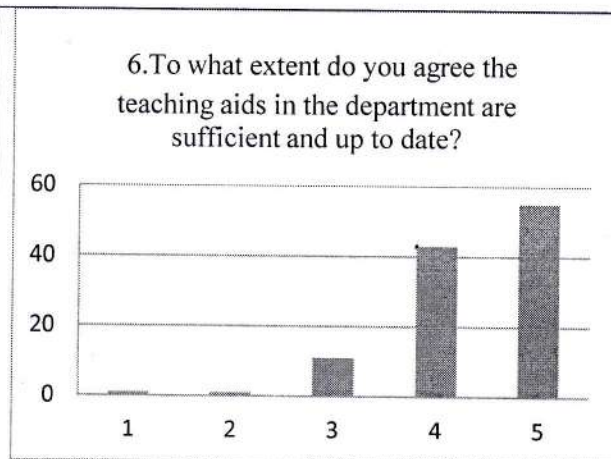
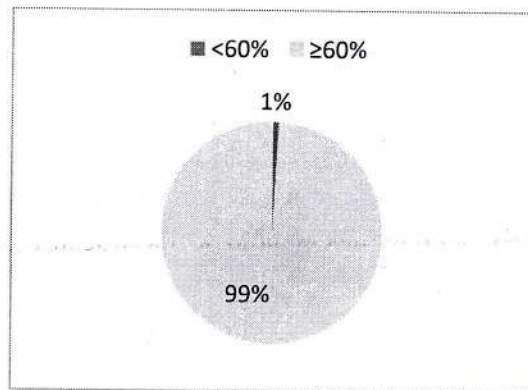
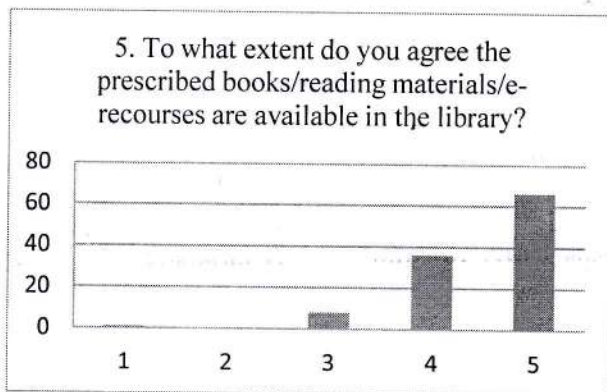
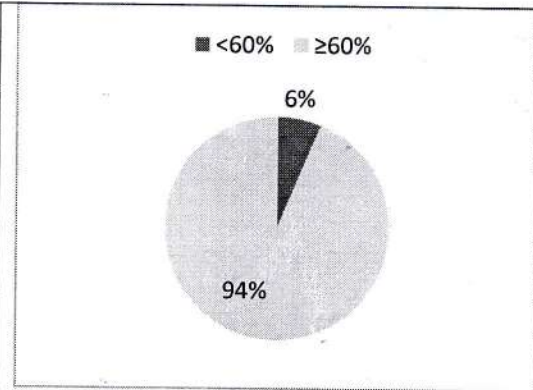
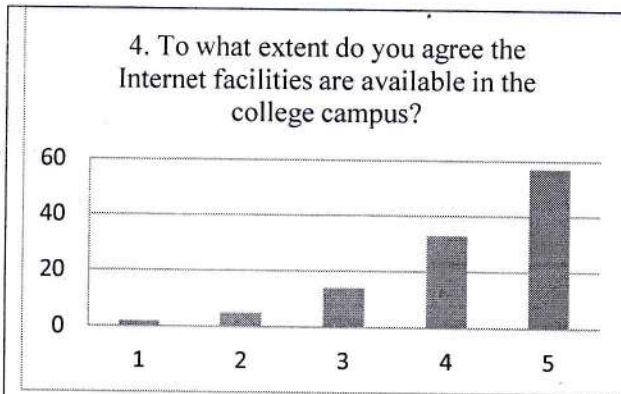
IQAC Coordinator

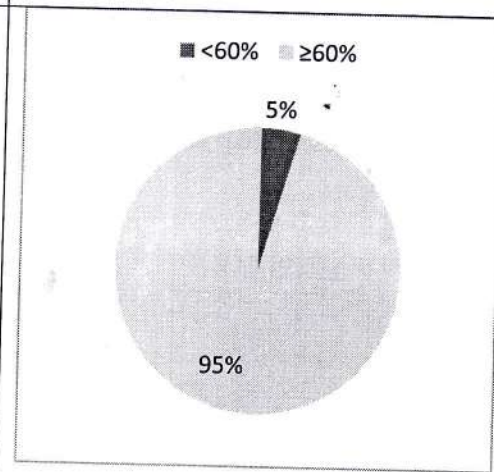
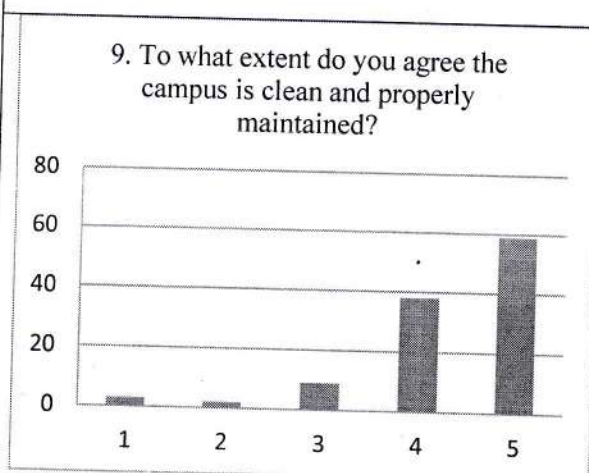
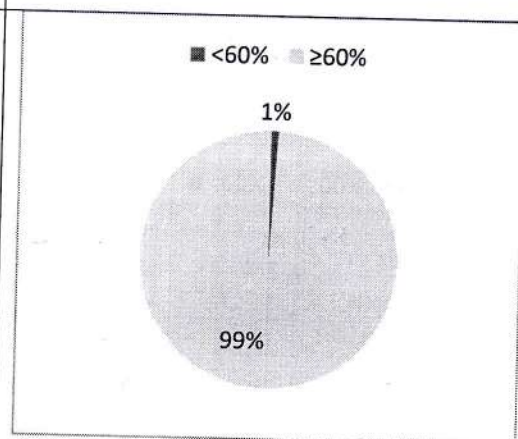
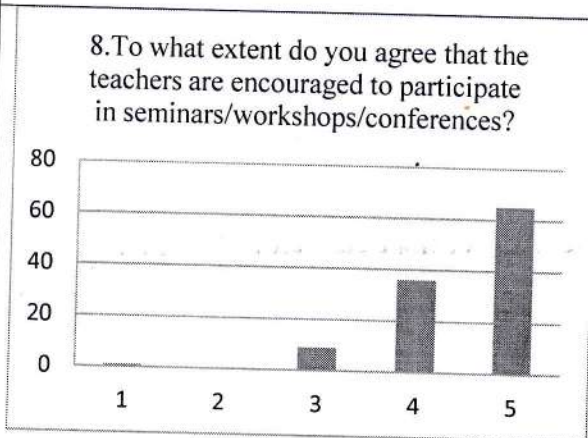
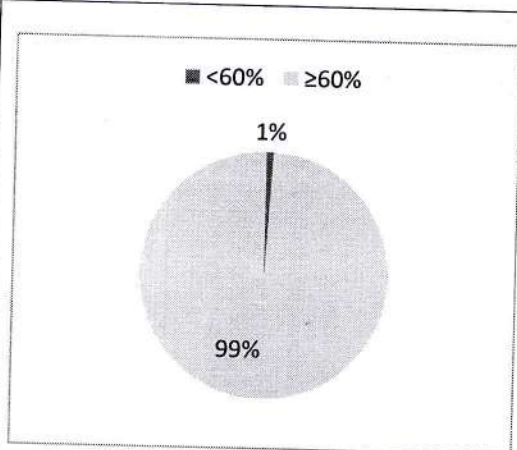
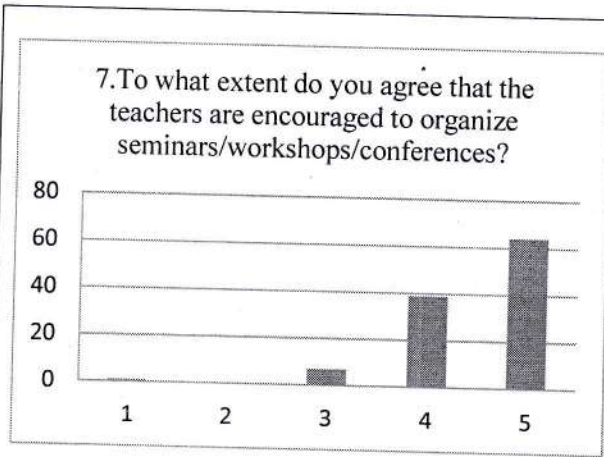
IQAC Chairperson
Prof. P. S. Saini
Jaipur Engineering College &
Research Centre
Bank Road, Jaipur-302022



Teacher Feedback Analysis







IQAC Coordinator

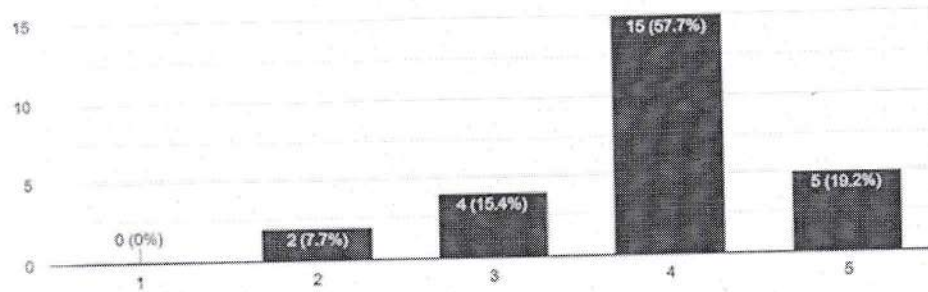
IQAC Chairperson
FOR JECRC
Jaipur Engineering College &
Research Centre
Tank Road, Jaipur-302022



Employer's Feedback Analysis Report

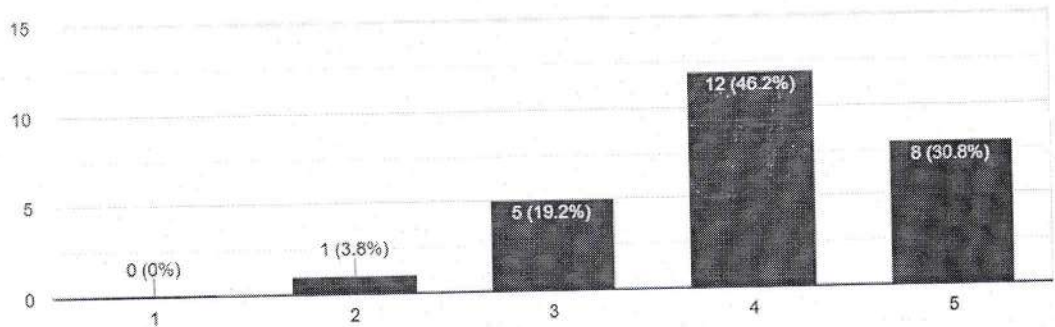
1. To what extent you agree with the vision of JECRC

26 responses

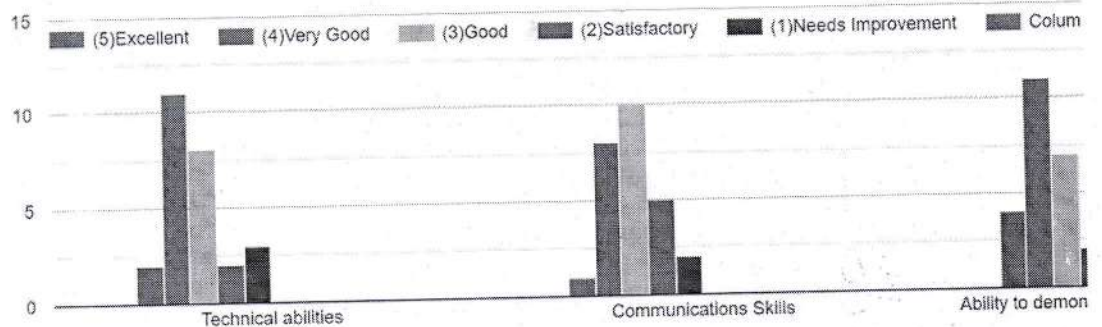


2. To what extent you agree with the Mission of JECRC

26 responses



3. Your observation during the recruitment drive. Pls find the following abilities/skills you think that are inculcated in our students.

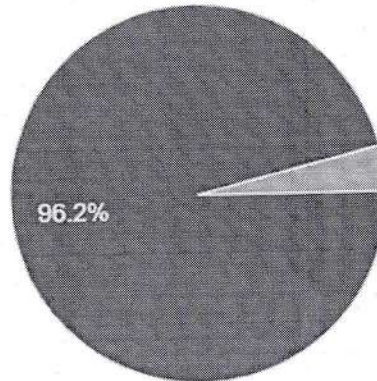




JAIPUR ENGINEERING COLLEGE
AND RESEARCH CENTRE

Are you willing to revisit again?

26 responses



- Yes
- No
- Maybe

How could our programs be improved? What specific comments do you have regarding the curriculum enrichment?

26 responses

The drive should be divided into parts. Everything in one day exhausts us. Exam, Result and interview should be separated into 2 days.

Include more live projects in the curriculum for a better exposure and knowledge of industry

More focus on professional skill enhancement

More session from industrial experts to make students aware about the corporate culture.

Peer Learning can be enhanced among students. Like students getting placed at first go can mentor their batchmates and help pre final year students to be aware of the opportunities available with various organisations


IQAC Coordinator


IQAC Chairperson
Jaipur Engineering College &
Research Centre
Bank Road, Jaipur-302022