

2.6.2 Attainment of Programme outcomes and course outcomes are evaluated by the institution.

CO MAPPING WITH PO-PSO FOR 2021-22

SUBJECT CODE	subject name		PO1	PO2	PO3	PO4	PO 5	PO 6	PO 7	PO 8	PO 9	PO 10	PO11	PO12	PSO 1	PSO 2	CO Attain t.	
8ME5-13	Additive Manufacturing	CO-1	3	2	1	2	0	2	1	1	1	2	0	2	2	3	0.71	
		CO-2	3	2	1	2	0	2	1	1	2	2	1	2	3	2	0.68	
		CO-3	3	2	2	2	0	2	1	1	1	2	0	2	3	3	0.72	
		CO-4	3	2	1	2	0	2	1	1	2	2	1	2	2	2	0.69	
8MI6-60.2	Maintenance Management	CO-1	3	3	2	2	1	1	1	1	2	1	2	2	1	0	0.68	
		CO-2	3	2	2	3	2	2	2	1	2	1	3	3	2	0	0.68	
		CO-3	3	3	3	3	3	1	2	1	3	1	3	3	2	0	0.66	
		CO-4	3	3	3	3	3	1	2	1	3	1	2	3	2	0	0.66	
8ME4-21	Industrial Engineering Lab	CO-1	3	2	2	0	0	2	0	0	0	2	0	2	0	0	1.00	
		CO-2	3	1	0	0	0	2	0	0	0	0	0	0	2	0	0	1.00
		CO-3	3	2	2	2	3	0	0	0	0	2	0	2	2	0	0	1.00
		CO-4	3	2	2	0	1	2	0	2	2	2	2	0	2	0	0	1.00
8ME4-22	Metrology Lab	CO-1	3	3	2	2	2	3	1	3	3	3	1	3	2	2	1.00	
		CO-2	3	2	1	3	3	2	2	2	2	2	2	2	1	3	3	1.00
		CO-3	3	1	1	0	0	0	0	0	0	1	1	0	1	2	0	1.00
		CO-4	3	3	2	2	1	1	2	2	2	2	2	1	3	2	0	1.00
8ME7-50	PROJECT	CO-1	3	3	3	2	2	2	2	2	3	3	3	3	3	3	3	0.99
		CO-2	3	3	3	2	2	2	2	2	1	3	3	2	3	3	2	0.99
		CO-3	2	2	2	1	1	2	2	2	2	2	3	1	3	3	3	0.99
		CO-4	3	3	3	3	3	2	2	2	2	2	2	3	3	3	2	0.99

7ME5-11	I. C. Engines	CO-1	3	1	2	2	1	1	2	1	1	1	2	3	2	1	0.34	
		CO-2	3	1	1	1	1	1	1	2	1	1	2	1	2	2	1	0.34
		CO-3	3	1	1	2	1	1	2	1	1	1	1	1	2	1	1	0.33
		CO-4	3	2	2	2	1	1	2	1	1	1	1	2	3	1	1	0.31
7EE6-60.2	Power Generation Sources	CO-1	2	1	1	2	2	3	3	1	0	1	2	2	0	0	0.32	
		CO-2	3	2	2	2	2	2	3	2	1	1	1	2	0	0	0.30	
		CO-3	2	1	1	2	2	3	3	1	0	1	2	3	0	0	0.59	
7ME4-21	FEA Lab	CO-1	3	2	1	0	3	0	1	1	2	3	0	2	2	0	1.00	
		CO-2	3	3	3	3	3	0	1	2	3	3	1	3	3	0	1.00	
		CO-3	3	3	2	2	2	1	2	1	2	2	2	3	3	0	1.00	
		CO-4	3	3	3	3	2	0	1	3	3	3	1	3	3	1	1.00	
7ME4-22	Thermal Engineering Lab-II	CO-1	3	3	3	1	2	3	3	2	2	1	2	3	3	1	1.00	
		CO-2	3	3	2	1	2	2	3	2	2	1	2	3	2	1	1.00	
		CO-3	3	3	2	1	2	1	2	1	2	1	2	2	1	1	1.00	
		CO-4	3	3	2	1	2	1	1	1	2	1	2	2	2	1	1.00	
7ME4-23	Quality Control Lab	CO-1	3	0	1	0	0	1	0	0	0	0	0	2	0	1	0.20	
		CO-2	3	1	2	2	0	0	1	1	2	1	0	2	0	0	0.20	
		CO-3	3	1	2	2	0	0	1	0	0	0	0	2	0	0	0.20	
		CO-4	2	1	2	2	3	0	1	0	0	0	1	2	1	0	0.20	
7ME7-30	Industrial TRAINING	CO-1	3	2	1	1	2	3	2	3	3	2	0	3	2	1	1.00	
		CO-2	3	2	1	1	2	3	2	3	3	2	0	3	2	1	1.00	
		CO-3	3	2	2	2	2	3	2	3	3	2	0	3	2	1	1.00	
		CO-4	3	2	2	2	2	3	2	3	3	2	0	3	2	1	1.00	
7ME7-40	SEMINAR	CO-1	3	3	2	2	3	2	3	2	3	3	2	2	2	3	0.99	
		CO-2	3	3	3	3	3	2	2	3	3	2	2	2	3	3	0.99	
		CO-3	2	2	3	2	3	2	2	3	3	3	2	3	2	2	0.99	
		CO-4	2	2	3	2	3	2	2	3	3	3	2	3	2	2	2.08	
6ME3-	Measureme	CO-1	3	2	0	2	2	1	0	0	0	1	0	3	2	2	0.12	

01	nt And Metrology	CO-2	3	2	0	2	2	0	0	0	1	2	1	2	3	2	0.10
		CO-3	3	2	1	1	3	0	0	1	2	2	2	3	3	3	0.13
		CO-4	3	2	0	2	1	0	0	1	1	2	2	2	3	2	0.11
		CO-5	3	2	1	2	2	0	0	0	0	3	0	3	2	2	0.14
6ME4-02	Computer Integrated Manufacturing Systems (CIMS)	CO-1	3	2	2	2	3	1	1	1	1	1	2	1	2	2	0.12
		CO-2	3	2	3	2	3	1	1	1	1	2	3	1	2	2	0.13
		CO-3	3	3	3	3	3	1	1	1	2	2	3	1	2	2	0.13
6ME4-03	Mechanical Vibrations	CO-1	3	3	2	1	0	2	1	2	1	1	0	1	3	2	0.09
		CO-2	3	3	3	2	0	1	0	1	1	0	1	1	3	2	0.07
		CO-3	3	3	2	3	1	2	0	1	0	0	1	1	3	1	0.12
		CO-4	3	2	2	2	2	2	2	0	1	1	0	2	3	1	0.12
6ME4-04	Design Of Machine Elements-II	CO-1	3	3	3	3	2	3	2	2	2	2	1	2	3	2	0.08
		CO-2	3	3	3	3	3	2	2	1	2	3	2	2	3	3	0.13
		CO-3	3	3	3	3	2	2	1	1	2	3	2	2	3	3	0.08
		CO-4	3	3	3	3	2	1	1	1	2	3	2	2	3	2	0.11
6ME4-05	Quality Management	CO-1	3	1	1	2	0	2	1	3	0	0	0	3	2	2	0.06
		CO-2	3	3	3	3	2	0	0	0	0	0	0	3	0	0	0.00
		CO-3	3	1	1	2	0	2	0	2	1	0	0	3	1	1	0.12
		CO-4	3	2	2	2	0	2	1	0	0	0	0	3	0	1	0.23
		CO-5	3	3	3	3	1	0	0	0	0	0	0	3	0	1	0.13
6ME5-11	Refrigeration And Air Conditioning	CO-1	3	3	3	2	2	2	1	1	1	1	1	0	2	0.09	
		CO-2	3	3	2	3	1	1	2	1	1	1	1	1	0	2	0.08
		CO-3	3	3	3	2	2	2	1	1	1	3	2	0	2	0.17	
		CO-4	3	3	3	3	2	2	1	2	1	2	3	2	0	2	0.10
6ME4-21	CIMS LAB.	CO-1	3	3	3	2	3	2	3	1	1	2	3	2	2	2	0.17
		CO-2	3	3	3	2	3	2	3	1	1	2	3	2	2	2	0.17

		CO-3	3	3	3	2	3	2	3	1	1	2	3	2	2	2	0.17
		CO-4	3	3	3	2	3	2	3	1	1	2	3	2	2	2	0.17
6ME4-22	Vibration Lab	CO-1	3	2	1	2	1	0	1	2	3	2	2	2	3	0	0.20
		CO-2	3	3	1	2	1	0	1	2	3	2	2	2	3	0	0.20
		CO-3	3	3	3	3	2	1	1	2	3	2	2	2	3	0	0.20
		CO-4	3	3	2	3	3	1	2	2	3	2	2	2	3	0	0.20
6ME4-23	Machine Design Practice – II	CO-1	3	2	2	1	2	1	1	1	2	2	2	2	2	2	0.13
		CO-2	3	3	3	3	3	3	2	2	2	2	3	2	3	2	0.13
		CO-3	3	3	3	3	3	3	2	2	2	2	3	2	3	1	0.13
		CO-4	3	3	3	3	3	3	2	2	2	2	3	2	3	1	0.13
6ME4-24	Thermal Engineering Lab-1	CO-1	3	1	1	0	0	1	2	1	0	1	0	2	2	0	0.16
		CO-2	3	2	1	3	1	1	1	0	0	1	1	1	1	1	0.16
		CO-3	3	1	1	1	1	1	1	2	1	1	1	2	3	2	0.17
		CO-4	3	1	1	1	1	1	1	2	1	1	1	2	3	2	0.17
5ME3-01	Mechatronic Systems	CO-1	3	1	1	1	1	3	3	3	2	2	2	3	2	1	0.13
		CO-2	3	1	3	1	1	2	2	1	2	2	1	2	2	2	0.16
		CO-3	3	3	3	3	2	2	1	2	1	3	2	3	2	2	0.12
		CO-4	3	3	3	3	2	2	1	2	1	3	2	3	2	2	0.16
5ME4-02	Heat Transfer	CO-1	3	2	1	2	0	1	1	0	0	1	0	2	3	1	0.28
		CO-2	3	2	1	2	0	1	1	0	0	1	0	3	3	1	0.30
		CO-3	3	2	2	2	1	1	2	1	0	1	2	3	3	0	0.29
5ME4-03	Manufacturing Technology	CO-1		3	1	2	3	1	0	1	0	2	2	3	3	0	0.23
		CO-2	3	3	2	2	2	1	0	1	0	1	1	3	3	0	0.11
		CO-3	3	2	1	0	2	0	0	1	0	0	1	2	3	0	0.22
		CO-4	3	1	1	0	2	0	1	1	1	0	1	3	3	0	0.25
5ME4-04	Design Of Machine Elements –	CO-1	3	3	3	3	2	1	2	1	2	2	2	2	3	2	0.16
		CO-2	3	3	3	3	1	1	2	1	1	2	2	2	3	2	0.15
		CO-3	3	3	3	3	2	2	1	1	2	1	2	2	3	3	0.15

	I	CO-4	3	3	3	3	2	1	1	2	2	3	2	2	2	2	0.14	
5ME4-05	Principles Of Management	CO-1	1	0	0	0	0	3	0	3	0	0	3	3	2	0	0.32	
		CO-2	1	3	0	3	3	3	3	3	0	3	3	3	3	2	0	0.30
		CO-3	3	0	0	3	3	3	3	3	3	3	3	3	3	2	0	0.32
		CO-4	0	0	0	0	0	3	0	3	3	0	3	3	3	2	0	0.30
5ME4-12	Automobile Engineering	CO-1	3	2	1	0	0	0	1	0	2	1	2	2	3	1	0.21	
		CO-2	3	1	0	0	1	1	0	0	2	1	2	0	3	1	0.23	
		CO-3	3	1	1	1	3	0	0	0	1	1	0	0	3	1	0.23	
		CO-4	3	0	1	0	2	1	0	0	1	2	0	2	3	2	0.23	
5ME3-21	Mechatronics lab.	CO-1	3	3	2	2	2	2	1	0	2	1	1	1	1	2	0.16	
		CO-2	3	3	2	2	2	2	1	0	1	1	0	1	2	2	0.17	
		CO-3	3	3	2	2	2	2	1	0	1	1	1	1	2	2	0.18	
		CO-4	3	3	3	3	2	1	1	0	2	1	1	2	2	0	0.16	
5ME4-22	Heat transfer lab.	CO-1	3	3	3	3	2	3	3	2	2	3	2	3	3	2	0.18	
		CO-2	3	3	3	3	2	3	3	2	2	3	2	3	3	2	0.18	
		CO-3	3	3	3	3	2	3	3	2	2	3	2	3	2	2	0.18	
		CO-4	3	3	3	3	2	3	2	2	2	3	2	3	1	0	0.18	
5ME4-23	Production engineering lab.	CO-1	3	3	3		3					2	3		3	1	0.51	
		CO-2	3	3	2		3					2	3		3	1	0.50	
		CO-3	3	3	2	2	3					2	3		3	0	0.38	
		CO-4	3	3	2	1	2					2	2		3	0	0.37	
5ME4-24	Machine Design Practice - I	CO-1	3	2	2	3	2	3	3	2	2	3	2	3	3	2	0.87	
		CO-2	3	3	2	3	2	2	2	1	2	3	1	2	3	1	0.87	
		CO-3	3	3	3	3	3	3	3	2	3	3	1	2	3	2	0.88	
		CO-4	3	3	3	3	3	3	3	2	3	3	1	2	3	2	0.88	
5ME7-30	Industrial TRAINING	CO-1	3	2	1	1	2	3	2	3	3	2	0	3	2	1	0.57	
		CO-2	3	2	1	1	2	3	2	3	3	2	0	3	2	1	0.57	
		CO-3	3	2	2	2	2	3	2	3	3	2	0	3	2	1	0.57	

		CO-4	3	2	2	2	2	3	2	3	3	2	0	3	2	1	0.57	
4ME2-01	Data analytics	CO-1	2	1	0	0	0	0	0	0	1	1	0	1	0	0	0.00	
		CO-2	2	1	0	0	0	0	0	0	0	1	1	0	1	0	0	0.00
		CO-3	2	1	0	0	0	0	0	0	0	1	1	0	1	0	0	0.00
		CO-4	2	1	0	0	0	0	0	0	0	1	1	0	1	0	0	0.00
4ME102	TC	CO-1	0	1	0	2	0	2	1	0	1	3	2	1	0	0	0.12	
		CO-2	0	1	0	3	0	2	1	0	1	3	2	1	0	0	0.07	
		CO-3	0	1	0	3	0	2	2	1	1	3	2	1	0	0	0.06	
																	0.08	
4ME3-04	Digital Electronics	CO-1	3	3	3	2	2	0	0	1	1	1	1	1	0	0	0.09	
		CO-2	2	2	1	0	1	1	0	1	1	1	0	1	0	0	0.04	
		CO-3	3	3	3	2	3	0	0	1	1	0	0	0	0	0	0.09	
		CO-4	2	2	2	1	3	1	1	0	0	1	0	0	0	0	0.04	
4ME4-05	Fluid Mechanics and Fluid Machines	CO-1	3	1	2	2	0	0	0	1	0	1	1	3	0	0	0.08	
		CO-2	3	2	1	2	0	0	0	1	0	2	1	3	0	0	0.08	
		CO-3	3	2	1	3	0	1	2	2	0	3	3	3	0	0	0.09	
		CO-4	3	2	2	2	0	1	2	2	0	3	3	3	0	0	0.09	
4ME4-06	Manufacturing Processes	CO-1	3	0	1	1	0	1	1	0	0	2	1	3	3	0	0.09	
		CO-2	3	2	1	0	1	1	1	0	0	1	1	2	3	0	0.03	
		CO-3	3	1	2	0	1	1	1	0	0	1	0	3	3	0	0.10	
		CO-4	3	1	1	0	0	1	1	0	0	1	0	2	3	0	0.11	
4ME4-07	Theory of machines	CO-1	3	3	3	2	1	2	1	1	1	1	2	2	2	0	0.16	
		CO-2	3	2	2	2	1	1	2	2	1	2	0	3	3	0	0.15	
		CO-3	3	3	3	2	1	1	1	0	0	1	1	2	3	0	0.15	
		CO-4	3	3	2	2	2	2	1	1	0	2	2	2	3	0	0.17	
		CO-5	3	2	2	2	1	2	1	2	0	2	1	2	3	0	0.17	
4ME3-21	Digital Electronics	CO-1	3	3	3	2	2	0	0	1	1	1	1	1	0	0	0.00	
		CO-2	2	2	1	0	1	1	0	1	1	1	0	1	0	0	0.00	

	lab	CO-3	3	3	3	2	3	0	0	1	1	0	0	0	0	0.00	
		CO-4	2	2	2	1	3	1	1	0	0	1	0	0	0	0.00	
4ME4-22	Fluid Mechanics lab	CO-1	3	2	1	1	0	0	1	1	2	1	0	3	0	0	0.20
		CO-2	3	2	1	1	0	1	1	1	2	1	0	3	0	0	0.20
		CO-3	3	2	1	1	0	0	1	1	1	2	0	3	0	0	0.20
		CO-4	3	2	1	1	0	0	1	1	1	2	0	3	0	0	0.20
4ME4-23	Production practice lab	CO-1	3	2	2	1	2	1	0	1	2	1	1	2	2	2	0.20
		CO-2	3	2	2	1	2	1	0	1	2	1	1	2	2	3	0.20
		CO-3	3	2	2	1	2	1	0	1	1	1	1	2	2	2	0.20
		CO-4	3	2	2	0	1	1	0	1	1	1	1	2	1	1	0.20
		CO-5	3	1	1	0	1	1	0	1	1	1	0	2	1	1	0.20
		CO-6	3	1	1	1	2	1	0	1	1	1	1	2	1	0	0.20
4ME4-24	Theory of machines Lab	CO-1	3	3	2	2	1	1	2	1	1	1	2	3	3	0	0.20
		CO-2	3	2	2	1	1	1	1	2	1	1	1	3	3	0	0.20
		CO-3	3	3	2	1	1	1	1	2	1	1	2	3	3	0	0.20
		CO-4	3	3	2	1	2	2	1	2	1	1	2	2	3	0	0.20
3ME2-01	Advance Engineering Mathematics-I	CO1	3	1							1	1		1	0	0	0.16
		CO-2	3	1							1	1		1	0	0	0.15
		CO-3	3	1							1	1		1	0	0	0.14
		CO-4	3	1							1	1		1	0	0	0.13
3ME1-02/ 3ME1-03	TC/MEFA	CO-1	1	3	2	3	2	3	3	3	2	2	3	3	1	3	0.20
		CO-2	3	3	2	2	2	3	2	3	3	2	3	3	2	3	0.18
		CO-3	3	3	2	2	3	3	2	2	3	2	3	2	3	3	0.18
		CO-4	3	3	2	2	2	2	2	3	2	2	3	2	1	3	0.20
3ME3-04	ENG. MECH.	CO-1	3	2	3	1	1	1	2	1	1	3	2	2	2	2	0.33
		CO-2	3	3	3	1	1	1	2	1	1	3	2	2	2	2	0.36
		CO-3	3	2	3	1	0	1	2	1	1	3	2	1	2	2	0.36
		CO-4	3	2	3	1	0	1	2	1	1	3	2	2	2	2	0.37

3ME4-05	Engineering Thermodynamics	CO-1	3	3	1	2	0	2	2	1	0	1	0	3	2	0	0.20	
		CO-2	3	3	2	2	0	1	1	1	1	0	1	0	3	2	0	0.22
		CO-3	3	3	2	2	1	2	2	0	0	1	0	0	3	2	0	0.21
3ME4-06	Materials Science and Engineering	CO-1	3	3	2	2	1	3	3	3	2	2	2	2	3	0	0.31	
		CO-2	3	2	2	3	2	2	3	2	1	3	2	2	3	0	0.28	
		CO-3	3	3	2	2	1	2	2	3	2	3	3	3	3	0	0.35	
		CO-4	3	3	2	2	1	3	2	3	2	3	2	3	3	0	0.31	
3ME4-07	Mechanics of Solids	CO-1	3	3	3	2	1	1	1	0	1	1	0	2	3	0	0.38	
		CO-2	3	2	2	2	1	1	1	0	1	1	0	3	3	0	0.37	
		CO-3	3	3	3	2	3	1	1	0	1	1	0	2	3	0	0.39	
3ME4-21	Machine drawing practice	CO-1	3	2	1	1	0	1	0	0	2	2	0	3	2	2	0.96	
		CO-2	3	2	2	1	0	1	0	0	2	2	0	3	3	3	0.96	
		CO-3	3	2	2	1	3	1	1	1	2	2	1	3	2	2	0.26	
		CO-4	3	2	3	3	3	1	1	0	2	2	1	3	3	3	0.96	
3ME4-22	Materials Testing Lab	CO-1	3	1	2	2	1	2	1	2	3	2	2	2	3	2	1.00	
		CO-2	3	2	2	2	3	3	1	2	3	2	2	2	3	2	1.00	
		CO-2	3	1	2	2	1	2	1	2	3	2	2	2	3	2	1.00	
		CO-4	3	3	3	3	2	3	1	2	3	2	3	3	3	2	1.00	
3ME4-23	Basic Mechanical Engineering Lab	CO-1	2	1	1	1	3	1	1	1	2	1	1	3	2	0	0.90	
		CO-2	3	2	2	2	2	3	1	2	3	1	1	3	1	0	0.90	
		CO-3	3	3	3	2	3	2	3	1	3	1	2	3	1	0	0.89	
		CO-4	3	1	1	2	3	2	3	2	3	1	2	3	1	1	0.89	
3ME4-24	Programming using MATLAB	CO-1	3	3	2	3	3	1	0	1	0	2	2	3	3	0	1.00	
		CO-2	3	3	2	3	3	1	0	1	0	2	2	3	3	0	1.00	
		CO-3	2	3	2	3	3	2	1	1	0	2	2	3	3	1	1.00	
		CO-4	2	3	2	3	3	2	1	1	1	1	1	3	3	1	1.00	
3ME7-	Industrial	CO-1	3	3	3	1	2	1	1	1	3	1	1	1	2	1	1.00	

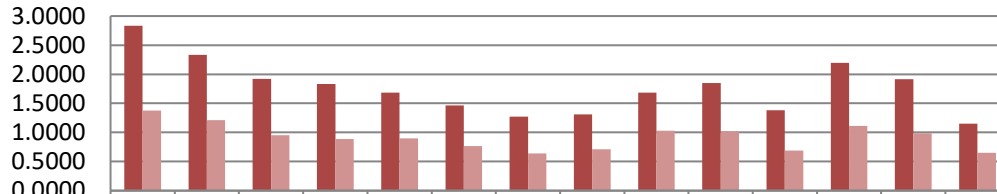
30	Training	CO-2	3	3	3	1	1	2	1	2	3	2	1	1	1	1	1.00
		CO-3	3	3	2	1	3	1	1	1	3	1	1	1	1	1	1.00
		CO-4	3	3	2	1	3	1	1	1	3	1	1	1	1	1	1.00
			2.83	2.21	1.90	1.79	1.6	1.4	1.2	1.2	1.4	1.6				1.89	1.00
			6	4	5	4	1	83	9	51	62	19	1.333	2.199	8	5	

	PO1	PO2	PO3	PO4	PO5	PO6	PO7	PO8	PO9	PO10	PO11	PO12	PSO1	PSO2
TARGET (DIRECT)	2.8396	2.2170	1.8990	1.7913	1.6039	1.4804	1.2892	1.2353	1.4585	1.6085	1.3285	2.1923	1.8915	0.9858
ACHIEVED (DIRECT)	1.1409	0.9171	0.7828	0.7063	0.7216	0.6537	0.5518	0.5590	0.7410	0.7046	0.5313	0.9293	0.8361	0.4407
TARGET (INDIRECT)	2.8000	2.8000	2.0000	2.0000	2.0000	1.4000	1.2000	1.6000	2.6000	2.8000	1.6000	2.2000	2.0000	1.8000
ACHIEVED (INDIRECT)	2.3260	2.3820	1.6240	1.6130	1.6160	1.2060	0.9836	1.3132	2.1748	2.2680	1.3096	1.8476	1.5836	1.4848
TARGET (OVERALL)	2.8317	2.3336	1.9192	1.8330	1.6831	1.4643	1.2714	1.3082	1.6868	1.8468	1.3828	2.1938	1.9132	1.1486
ACHIEVED (OVERALL)	1.3779	1.2101	0.9510	0.8877	0.9005	0.7641	0.6382	0.7098	1.0277	1.0173	0.6870	1.1130	0.9856	0.6496

	PO1	PO2	PO3	PO4	PO5	PO6	PO7	PO8	PO9	PO10	PO11	PO12	PSO1	PSO2
TARGET (OVERALL)	2.8317	2.3336	1.9192	1.8330	1.6831	1.4643	1.2714	1.3082	1.6868	1.8468	1.3828	2.1938	1.9132	1.1486
ACHIEVED (OVERALL)	1.3779	1.2101	0.9510	0.8877	0.9005	0.7641	0.6382	0.7098	1.0277	1.0173	0.6870	1.1130	0.9856	0.6496

	PO1	PO2	PO3	PO4	PO5	PO6	PO7	PO8	PO9	PO10	PO11	PO12	PSO1	PSO2
ACHIEVED (2019-20)	1.9294	1.6460	1.3103	1.2626	1.0218	0.9242	0.7770	0.7431	0.9729	1.2112	0.9400	1.4729	1.1983	0.8599
ACHIEVED (2020-21)	2.3807	1.9667	1.5974	1.4936	1.3931	1.1560	1.0005	1.0203	1.3128	1.4645	1.0697	1.7467	1.5248	0.9054
ACHIEVED (2021-22)	1.3779	1.2101	0.9510	0.8877	0.9005	0.7641	0.6382	0.7098	1.0277	1.0173	0.6870	1.1130	0.9856	0.6496

PO PSO ATTAINMENT 2020-21



■ TARGET (OVERALL)	2.831	2.333	1.919	1.833	1.683	1.464	1.271	1.308	1.686	1.846	1.382	2.193	1.913	1.148
■ ACHIEVED (OVERALL)	1.377	1.210	0.951	0.887	0.900	0.764	0.638	0.709	1.027	1.017	0.687	1.113	0.985	0.649

Chart Title

